



Noise Monitoring Result

Day Time (0700 - 1900hrs on normal weekdays)

Location: M1a - Harbour Road Sports Centre

Date	Time	Weather	Measurement Noise Level			Baseline Level	Construction Noise Level	Limit Level
			Leq	L10	L90	Leq	Leq	Leq
Unit: dB(A), (30-min)								
2/12/2013	11:30	Fine	71.6	74.5	65.0	72	72	75
10/12/2013	14:00	Fine	71.9	74.5	67.0	72	72	75
19/12/2013	10:45	Fine	72.5	75.0	67.0	72	61	75
23/12/2013	9:23	Fine	73.1	76.0	68.0	72	66	75

Location: M2b - Noon-day gun area

Date	Time	Weather	Measurement Noise Level			Baseline Level	Construction Noise Level	Limit Level
			Leq	L10	L90	Leq	Leq	Leq
Unit: dB(A), (30-min)								
4/12/2013	9:32	Fine	70.0	72.0	67.0	68	66	75
10/12/2013	16:40	Fine	69.7	71.5	66.5	68	66	75
18/12/2013	8:40	Fine	67.9	71.3	61.4	68	56	75
23/12/2013	10:07	Fine	74.2	76.5	69.0	68	73	75

Location: M3a - Tung Lo Wan Fire Station

Date	Time	Weather	Measurement Noise Level			Baseline Level	Construction Noise Level	Limit Level
			Leq	L10	L90	Leq	Leq	Leq
Unit: dB(A), (30-min)								
4/12/2013	10:16	Fine	66.4	67.5	64.0	69	66	75
10/12/2013	17:45	Fine	66.5	67.5	65.0	69	67	75
18/12/2013	9:20	Fine	68.8	70.5	66.0	69	69	75
23/12/2013	10:46	Fine	67.8	69.0	65.0	69	68	75

Location: M4b - Victoria Centre

Date	Time	Weather	Measurement Noise Level			Baseline Noise Level	Construction Noise Level	Limit Level
			Leq	L10	L90	Leq	Leq	Leq
Unit: dB(A), (30min)								
4/12/2013	11:03	Fine	71.8	73.0	69.5	67	70	75
10/12/2013	8:29	Cloudy	73.9	76.0	68.0	67	73	75
18/12/2013	10:05	Fine	72.0	73.5	68.0	67	70	75
23/12/2013	11:24	Fine	70.6	72.5	67.0	67	68	75

Location: M5b - City Garden

Date	Time	Weather	Measurement Noise Level			Baseline Level	Construction Noise Level	Limit Level
			Leq	L10	L90	Leq	Leq	Leq
Unit: dB(A), (30min)								
4/12/2013	15:37	Fine	68.1	70.0	65.5	68	52	75
10/12/2013	10:36	Cloudy	68.9	70.0	66.5	68	62	75
17/12/2013	15:05	Cloudy	67.1	68.0	64.5	68	67	75
23/12/2013	13:07	Fine	69.8	71.0	68.0	68	65	75

Location: M6 - HK Baptist Church Henrietta Secondary School

Date	Time	Weather	Measurement Noise Level			Baseline Level	Construction Noise Level	Limit Level
			Leq	L10	L90	Leq	Leq	Leq
Unit: dB(A), (30-min)								
4/12/2013	16:48	Fine	73.2	74.0	71.5	71	70	70
10/12/2013	9:18	Cloudy	75.2	76.0	73.0	71	73	65
18/12/2013	10:40	Fine	74.6	76.6	73.2	71	72	65
23/12/2013	14:50	Fine	73.1	74.5	71.0	71	69	70



Noise Monitoring Result

Day Time (0700 - 1900hrs on normal weekdays)

Location: M7e - International Finance Centre (Eastern End of Podium) (Reference Station)

Date	Time	Weather	Measurement Noise Level			Baseline Level	Construction Noise Level	Limit Level
			Leq	L10	L90	Leq	Leq	Leq
Unit: dB(A), (30-min)								
2/12/2013	10:00	Fine	72.3	75.0	66.5	67	71	N/A
10/12/2013	14:35	Fine	69.2	71.0	66.0	67	65	N/A
19/12/2013	9:50	Fine	72.9	75.5	65.5	67	72	N/A
23/12/2013	16:00	Fine	69.8	71.5	65.5	67	67	N/A

Location: M7w - International Finance Centre (Western End of Podium)

Date	Time	Weather	Measurement Noise Level			Baseline Level	Construction Noise Level	Limit Level
			Leq	L10	L90	Leq	Leq	Leq
Unit: dB(A), (30-min)								
2/12/2013	9:25	Fine	67.1	68.0	63.5	69	67	75
10/12/2013	14:00	Fine	68.0	70.5	63.0	69	68	75
19/12/2013	9:10	Fine	68.6	70.0	66.0	69	69	75
23/12/2013	16:35	Fine	66.6	68.5	63.5	69	67	75

Location: M8 - City Hall

Date	Time	Weather	Measurement Noise Level			Baseline Level	Construction Noise Level	Limit Level
			Leq	L10	L90	Leq	Leq	Leq
Unit: dB(A), (30-min)								
2/12/2013	10:50	Fine	61.4	62.5	56.0	64	61	70
10/12/2013	15:10	Fine	63.2	65.5	58.5	64	63	70
19/12/2013	8:15	Fine	61.7	64.0	58.0	64	62	70
23/12/2013	17:18	Fine	64.5	66.5	56.0	64	55	70



Noise Monitoring Result

Day Time (0700 - 1900hrs on normal weekdays)

Location: M1a - Harbour Road Sports Centre

Date	Time	Weather	Measurement Noise Level			Baseline Level	Construction Noise Level	Limit Level
			Leq	L10	L90	Leq	Leq	Leq
Unit: dB(A), (30-min)								
31/12/2013	8:16	Fine	71.7	74.5	66.0	72	72	75
7/1/2014	10:51	Fine	75.4	78.0	71.0	72	73	75
13/1/2014	10:56	Fine	73.1	75.0	69.5	72	66	75
22/1/2014	14:40	Fine	71.7	74.0	67.0	72	72	75
28/1/2014	10:29	Fine	73.0	75.5	67.5	72	65	75

Location: M2b - Noon-day gun area

Date	Time	Weather	Measurement Noise Level			Baseline Level	Construction Noise Level	Limit Level
			Leq	L10	L90	Leq	Leq	Leq
Unit: dB(A), (30-min)								
31/12/2013	9:00	Fine	69.7	71.0	67.5	68	66	75
7/1/2014	13:25	Fine	71.7	73.5	68.5	68	70	75
14/1/2014	9:55	Fine	70.3	71.0	69.0	68	67	75
22/1/2014	15:35	Fine	73.3	75.0	70.0	68	72	75
28/1/2014	11:11	Fine	74.0	77.5	68.0	68	73	75

Location: M3a - Tung Lo Wan Fire Station

Date	Time	Weather	Measurement Noise Level			Baseline Level	Construction Noise Level	Limit Level
			Leq	L10	L90	Leq	Leq	Leq
Unit: dB(A), (30-min)								
31/12/2013	9:40	Fine	68.2	70.0	65.5	69	68	75
7/1/2014	14:06	Fine	70.2	73.0	65.5	69	65	75
14/1/2014	15:59	Fine	68.5	71.0	65.0	69	69	75
22/1/2014	16:21	Fine	67.9	69.5	65.5	69	68	75
28/1/2014	13:39	Fine	70.3	72.5	65.5	69	65	75

Location: M4b - Victoria Centre

Date	Time	Weather	Measurement Noise Level			Baseline Noise Level	Construction Noise Level	Limit Level
			Leq	L10	L90	Leq	Leq	Leq
Unit: dB(A), (30min)								
31/12/2013	10:20	Fine	70.9	72.0	68.0	67	68	75
7/1/2014	14:46	Fine	70.6	71.5	66.5	67	68	75
14/1/2014	10:40	Fine	71.6	73.5	67.5	67	70	75
23/1/2014	9:20	Fine	70.3	71.5	68.5	67	67	75
28/1/2014	13:00	Fine	69.8	72.5	65.5	67	66	75

Location: M5b - City Garden

Date	Time	Weather	Measurement Noise Level			Baseline Level	Construction Noise Level	Limit Level
			Leq	L10	L90	Leq	Leq	Leq
Unit: dB(A), (30min)								
31/12/2013	11:00	Fine	69.8	71.0	67.5	68	65	75
7/1/2014	15:30	Fine	68.1	69.0	65.5	68	52	75
14/1/2014	13:54	Fine	67.6	68.5	65.5	68	68	75
23/1/2014	11:20	Fine	69.0	70.5	66.0	68	62	75
27/1/2014	10:41	Fine	68.3	69.5	66.5	68	57	75

Location: M6 - HK Baptist Church Henrietta Secondary School

Date	Time	Weather	Measurement Noise Level			Baseline Level	Construction Noise Level	Limit Level
			Leq	L10	L90	Leq	Leq	Leq
Unit: dB(A), (30-min)								
31/12/2013	15:00	Fine	70.4	71.5	68.0	71	70	70
7/1/2014	14:09	Fine	73.7	74.5	72.0	71	71	70
14/1/2014	14:35	Fine	74.4	75.0	72.5	71	72	70
23/1/2014	10:05	Fine	75.2	76.5	73.0	71	73	65
27/1/2014	9:34	Fine	75.9	79.5	71.0	71	74	70



Noise Monitoring Result

Day Time (0700 - 1900hrs on normal weekdays)

Location: M7e - International Finance Centre (Eastern End of Podium) (Reference Station)

Date	Time	Weather	Measurement Noise Level			Baseline Level	Construction Noise Level	Limit Level
			Leq	L10	L90	Leq	Leq	Leq
Unit: dB(A), (30-min)								
31/12/2013	14:02	Fine	68.5	69.5	64.5	67	64	N/A
7/1/2014	8:37	Fine	67.2	68.5	65.0	67	57	N/A
13/1/2014	9:15	Fine	72.4	74.5	67.5	67	71	N/A
20/1/2014	10:05	Fine	72.4	74.0	69.5	67	71	N/A
28/1/2014	9:01	Fine	69.2	70.5	66.5	67	65	N/A

Location: M7w - International Finance Centre (Western End of Podium)

Date	Time	Weather	Measurement Noise Level			Baseline Level	Construction Noise Level	Limit Level
			Leq	L10	L90	Leq	Leq	Leq
Unit: dB(A), (30-min)								
31/12/2014	13:20	Fine	73.8	78.0	63.5	69	72	75
7/1/2014	9:15	Fine	67.0	68.5	64.5	69	67	75
13/1/2014	9:50	Fine	71.8	73.5	64.5	69	68	75
20/1/2014	10:42	Fine	70.2	73.7	68.6	69	62	75
28/1/2014	9:37	Fine	68.1	69.5	65.0	69	68	75

Location: M8 - City Hall

Date	Time	Weather	Measurement Noise Level			Baseline Level	Construction Noise Level	Limit Level
			Leq	L10	L90	Leq	Leq	Leq
Unit: dB(A), (30-min)								
30/12/2014	16:00	Fine	62.3	65.0	57.5	64	62	70
7/1/2014	10:04	Fine	60.6	62.5	57.0	64	61	70
14/1/2014	9:05	Fine	63.0	65.0	58.5	64	63	70
20/1/2014	14:35	Fine	69.7	71.4	66.9	64	68	70
27/1/2014	16:29	Fine	62.5	64.0	57.0	64	63	70



Noise Monitoring Result

Day Time (0700 - 1900hrs on normal weekdays)

Location: M1a - Harbour Road Sports Centre

Date	Time	Weather	Measurement Noise Level			Baseline Level	Construction Noise Level	Limit Level
			Leq	L10	L90	Leq	Leq	Leq
Unit: dB(A), (30-min)								
4/2/2014	14:52	Fine	71.2	74.0	64.5	72	71	75
10/2/2014	15:30	Cloudy	71.3	73.5	66.5	72	71	75
18/2/2014	13:22	Fine	72.0	75.0	66.5	72	72	75
24/2/2014	16:25	Fine	72.2	74.5	68.0	72	72	75

Location: M2b - Noon-day gun area

Date	Time	Weather	Measurement Noise Level			Baseline Level	Construction Noise Level	Limit Level
			Leq	L10	L90	Leq	Leq	Leq
Unit: dB(A), (30-min)								
4/2/2014	13:54	Fine	67.1	68.5	65.0	68	67	75
10/2/2014	16:15	Cloudy	70.4	72.5	67.5	68	67	75
18/2/2014	14:06	Fine	69.9	71.0	67.5	68	66	75
25/2/2014	13:15	Fine	69.6	72.0	67.5	68	65	75

Location: M3a - Tung Lo Wan Fire Station

Date	Time	Weather	Measurement Noise Level			Baseline Level	Construction Noise Level	Limit Level
			Leq	L10	L90	Leq	Leq	Leq
Unit: dB(A), (30-min)								
4/2/2014	13:03	Fine	64.6	65.5	61.5	69	65	75
13/2/2014	13:48	Cloudy	68.8	71.0	65.5	69	69	75
18/2/2014	14:48	Fine	71.8	74.0	67.5	69	69	75
25/2/2014	14:05	Fine	68.0	70.5	64.5	69	68	75

Location: M4b - Victoria Centre

Date	Time	Weather	Measurement Noise Level			Baseline Noise Level	Construction Noise Level	Limit Level
			Leq	L10	L90	Leq	Leq	Leq
Unit: dB(A), (30min)								
4/2/2014	11:16	Fine	68.1	70.0	65.0	67	60	75
13/2/2014	14:30	Cloudy	68.3	69.5	66.0	67	61	75
18/2/2014	15:31	Fine	70.1	71.5	67.5	67	67	75
25/2/2014	14:45	Fine	68.4	70.0	66.0	67	62	75

Location: M5b - City Garden

Date	Time	Weather	Measurement Noise Level			Baseline Level	Construction Noise Level	Limit Level
			Leq	L10	L90	Leq	Leq	Leq
Unit: dB(A), (30min)								
4/2/2014	9:28	Fine	67.3	68.5	65.0	68	67	75
13/2/2014	16:35	Cloudy	68.5	69.5	67.0	68	59	75
18/2/2014	16:18	Fine	67.5	68.5	65.5	68	68	75
25/2/2014	15:26	Fine	67.2	68.5	65.5	68	67	75

Location: M6 - HK Baptist Church Henrietta Secondary School

Date	Time	Weather	Measurement Noise Level			Baseline Level	Construction Noise Level	Limit Level
			Leq	L10	L90	Leq	Leq	Leq
Unit: dB(A), (30-min)								
4/2/2014	10:24	Fine	72.6	73.5	70.5	71	68	70
13/2/2014	15:22	Cloudy	75.7	76.5	74.0	71	74	65
20/2/2014	9:39	Fine	72.3	74.0	70.0	71	67	65
25/2/2014	16:05	Fine	73.9	75.0	72.0	71	71	70



Noise Monitoring Result

Day Time (0700 - 1900hrs on normal weekdays)

Location: M7e - International Finance Centre (Eastern End of Podium) (Reference Station)

Date	Time	Weather	Measurement Noise Level			Baseline Level	Construction Noise Level	Limit Level
			Leq	L10	L90	Leq	Leq	Leq
Unit: dB(A), (30-min)								
5/2/2014	14:06	Fine	67.2	69.0	64.0	67	57	N/A
14/2/2014	10:32	Fine	67.7	69.5	65.0	67	60	N/A
18/2/2014	10:19	Fine	69.4	70.4	64.5	67	66	N/A
24/2/2014	15:35	Fine	68.2	70.0	64.5	67	63	N/A

Location: M7w - International Finance Centre (Western End of Podium)

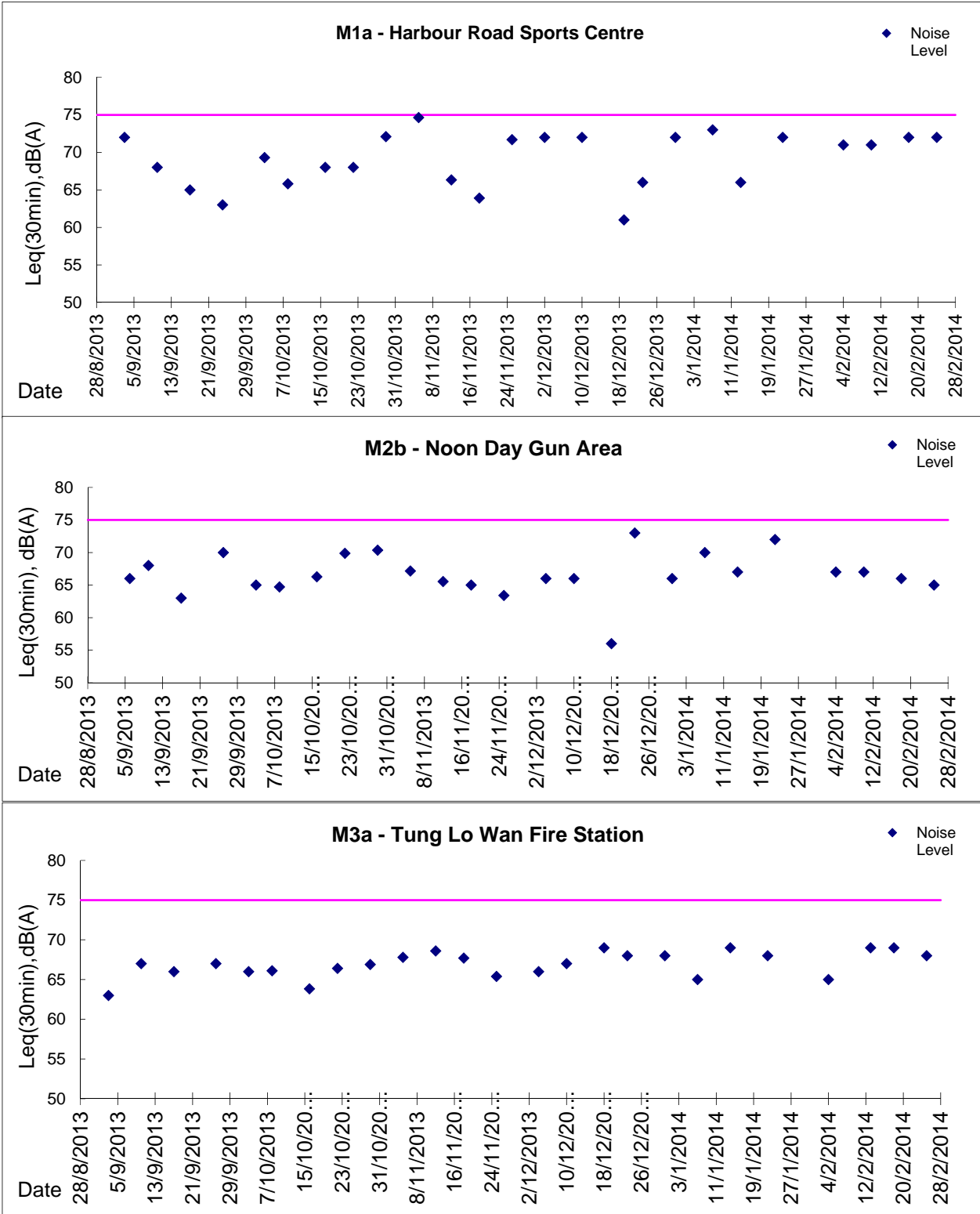
Date	Time	Weather	Measurement Noise Level			Baseline Level	Construction Noise Level	Limit Level
			Leq	L10	L90	Leq	Leq	Leq
Unit: dB(A), (30-min)								
5/2/2014	14:45	Fine	65.7	67.5	61.5	69	66	75
14/2/2014	9:55	Fine	66.2	68.0	63.5	69	66	75
18/2/2014	9:39	Fine	66.9	69.5	63.5	69	67	75
24/2/2014	15:00	Fine	67.9	70.5	63.5	69	68	75

Location: M8 - City Hall

Date	Time	Weather	Measurement Noise Level			Baseline Level	Construction Noise Level	Limit Level
			Leq	L10	L90	Leq	Leq	Leq
Unit: dB(A), (30-min)								
4/2/2014	16:03	Fine	60.0	62.5	56.0	64	60	70
10/2/2014	15:45	Cloudy	60.4	62.5	56.5	64	60	70
18/2/2014	11:09	Fine	62.0	65.0	57.0	64	62	70
24/2/2014	9:00	Fine	60.2	62.5	56.5	64	60	70

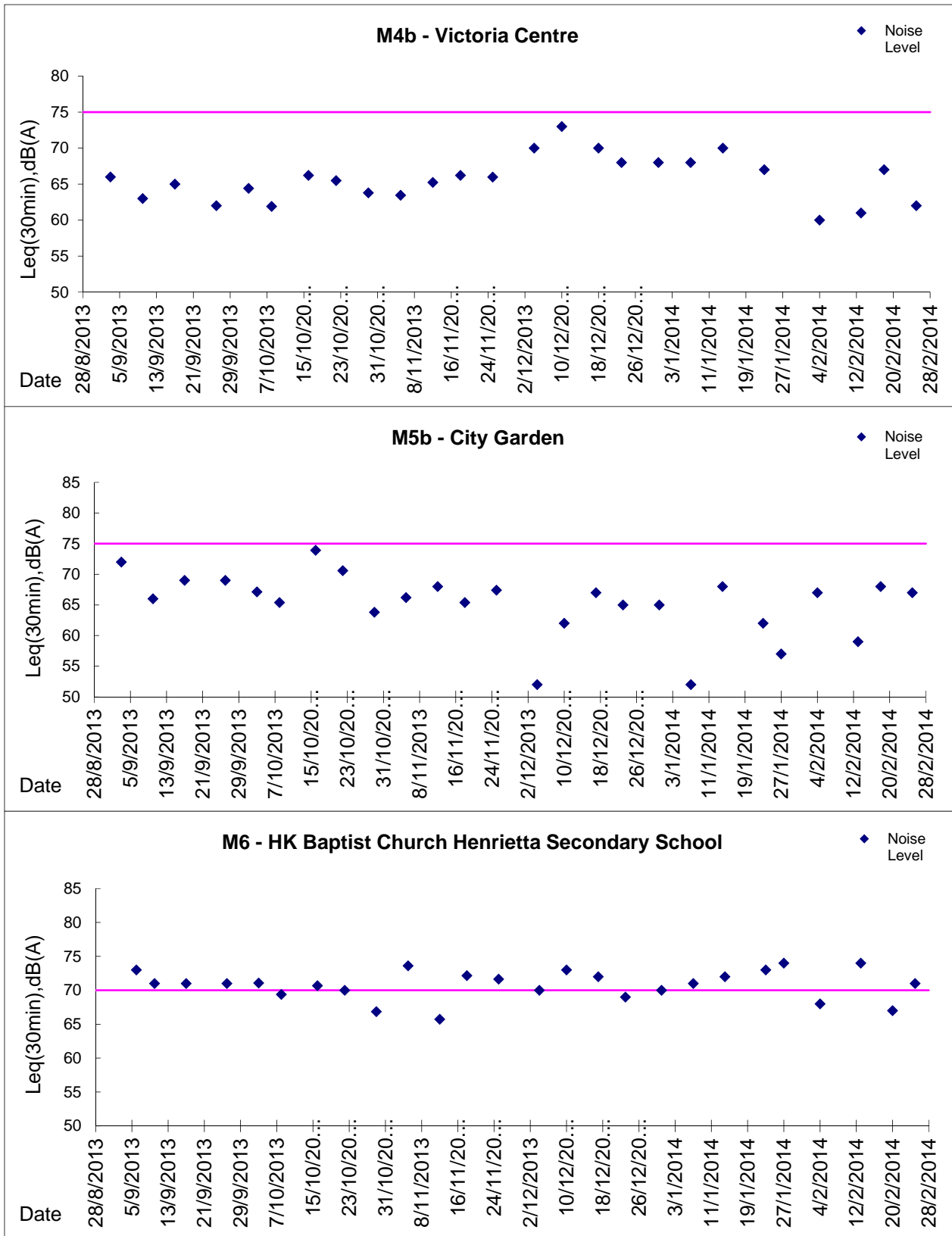


Graphic Presentation of Noise Monitoring Result
Day Time (0700 - 1900hrs on normal weekdays)



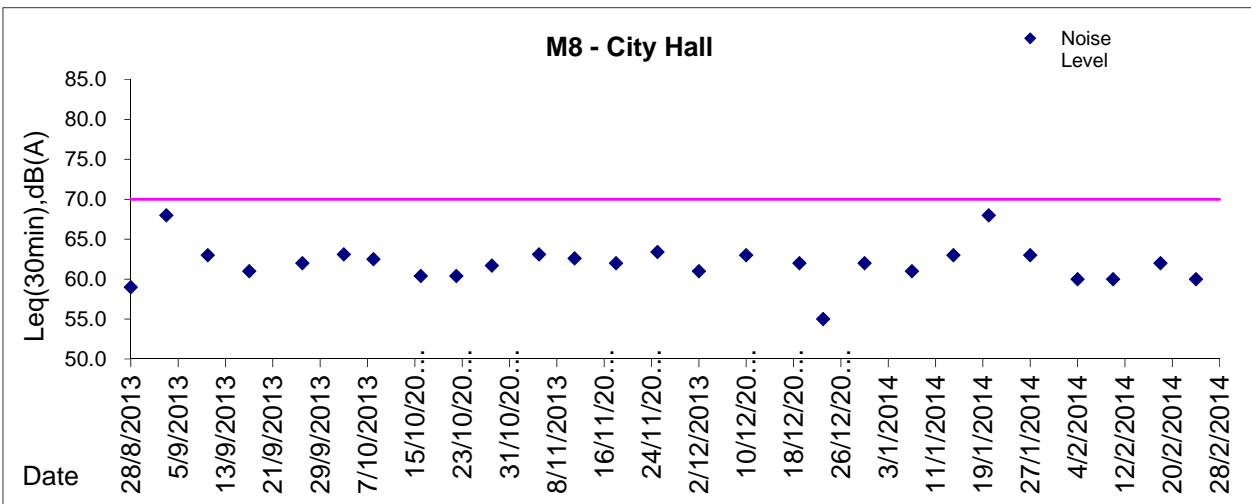
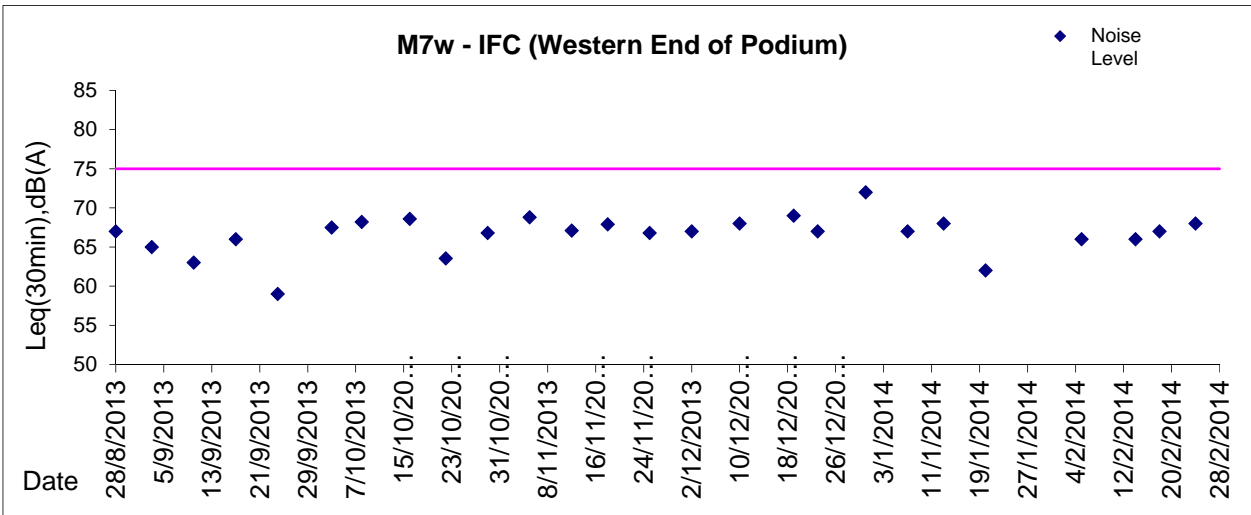
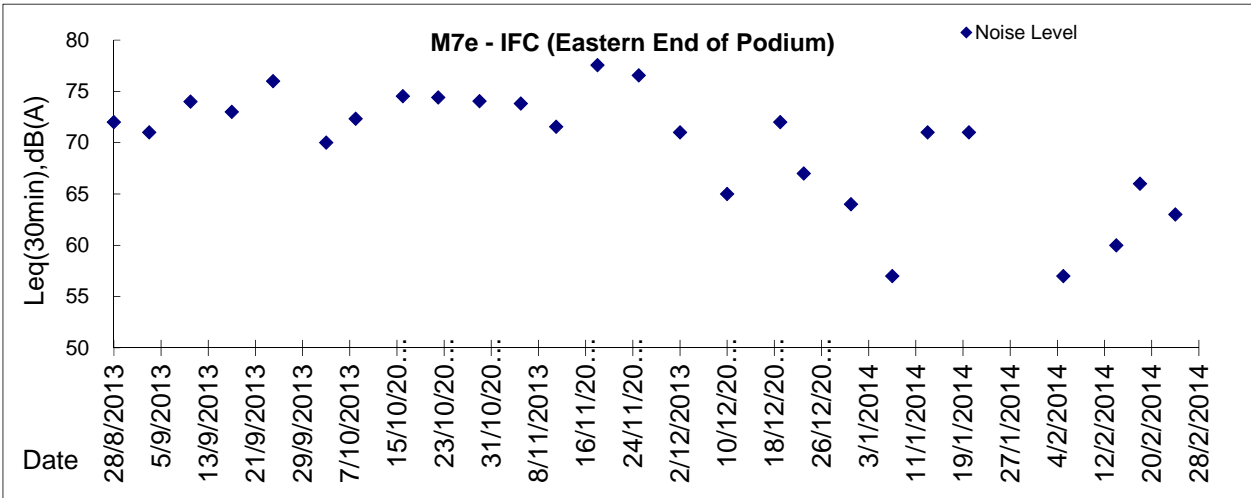


Graphic Presentation of Noise Monitoring Result
Day Time (0700 - 1900hrs on normal weekdays)





Graphic Presentation of Noise Monitoring Result
Day Time (0700 - 1900hrs on normal weekdays)



* Remark: M7e - IFC (Eastern End of Podium) is a reference monitoring station